



mid michigan
COMMUNITY
Action

"Helping People, Changing Lives."

Annual Report 2018



Board of Directors

Our dedicated board comprise individuals from the public sector, private sector, and consumer sector. This tri-partite representation ensures the agency receives multiple perspectives regarding the causes and conditions of poverty.

Bay County

William Reder, **Chair**
Vaughn Begick
Carol Goulet

Clare County

Norm Gage
Sandy Bristol
Nancy Jones, **Secretary**

Gladwin County

Kathy Wilton
Sandra Aultman
Ruth Johnson

Mecosta County

Lori Johnson
Jerrilynn Strong, **Treasurer**

Midland County

Sharron Such, **Vice-Chair**
Steve Glaser
Susan Weimer

Osceola County

Alan Tiedt
Cynthia Wertz

Head Start Policy Council Representative

Amanda Merrill

Financial Consultant

Tammy Miller

Former Members

Melissa Clever
William Hargreaves
Jan Stewart

Executive Message



Another year behind us with a new year upon its heels... this transition provides a unique time to reflect on what we have learned along the way...

Continuing to embrace life's lessons provides each one of us, young or old, rich or poor, male or female, representing any culture, a chance to consider the path we want to take based on the path we may have left behind. We may encounter obstacles along the way causing us to think critically on whether we want to turn left or right; however, if you can identify the appropriate supports to lean on, or walk upon strong stepping stones that keep us balanced, we may find the way to our desired goals.

Let's think about it. Whether we're stuck in an avalanche of snow blinding our ability to see clearly; or we find ourselves neck deep in quicksand, something outside of our control may be holding us back. This may be a time to lean on a friend, family member or call your local

Reaching out for help is truly a sign of strength and we value the opportunity to help others as they help themselves.

Community Action Agency. Reaching out for help is truly a sign of strength and we value the opportunity to help others as they help themselves.

And for those that find themselves in these difficult situations, our Community Action continues to step in and provide stepping stones to direct individuals and families on a new or enhanced pathway. Programs, services, staff and volunteers all provide a solid foothold helping our customers find their way.

We are fully committed to providing quality programs aimed at empowering our participants. It is a privilege to be welcomed into their lives, families, and homes. We promise to seek out new resources to support our communities and will strive to be outstanding stewards of these funds to ensure continuity for those seeking our help.

Whether you are a volunteer, participant, community partner, stakeholder, board member or employee, we salute each and every one of you for your contribution to this process. May the new year bring us hope and balance as we contemplate the best way forward...

Fondly,

A handwritten signature in black ink that reads "Jill Sutton".

Jill Sutton
Executive Director

Outreach Services

Outreach Services made great strides this year, increasing both departmental capacity and knowledge. For starters, staff began training in Motivational Interviewing this year. This vital tool will help staff continue to provide the best guidance and assistance to community members in need.



Also, the Clare County Food Pantry has transitioned to a customer choice pantry to empower our customers to make nutritious choices for themselves and their families. Now, community members in need can choose the type of protein, vegetable, and starch that they take home, in order to best fit their particular nutritional needs and tastes.

Basic Needs Program Stats

Utility Assistance

Number of households provided emergency heat assistance	1063
Number of utility payments	1117
Amount expended for utility assistance.....	\$1,446,134

Rehousing Assistance

Amount expended for rehousing assistance	\$554,595
Number of individuals participating in rental counseling.....	63
Households that obtained safe and affordable housing.....	351

Food & Nutrition Assistance

Households with improved health and well-being from increased nutritional skills	891
Number of households receiving a quarterly box of commodity foods.....	4776
Number of senior households receiving a monthly box of commodity foods.....	3873
Number of mom's receiving breastfeeding peer support	477
Number of children that received food through preschool program.....	273

**“Having needs is not evidence of
weakness – it is human.”
– Danielle Bernock**

Early Childhood Services

For Early Childhood Services, the past year has been filled with many challenges that were turned into opportunities and, while doing so, continued its history of excellence in guiding families on the path of healthy growth and development. This past year has proven that the department is, in fact, extremely effective. Even as services to children and families become increasingly more complex, federal reviews and state audits all confirm the high quality of the programs run under the Early Childhood Services Department.

Number of Children Served

Head Start.....253
Early Head Start.....245

Families Served

Head Start.....253
Early Head Start.....266

Pregnant Women Served

Early Head Start..... 21

Average Monthly Enrollment

Head Start.....234
Early Head Start.....135

Up-to-date on a schedule of primary and preventative health care:

Head Start..... 95%
Early Head Start..... 80%

Children completing dental exams and oral health screenings:

Head Start..... 88%
Early Head Start..... 70%

Children with up-to-date immunizations:

Head Start..... 92%
Early Head Start..... 75%

Enrolled children with a disability:

Head Start..... 17%
Early Head Start..... 19%

Family Involvement:

42% of Children and their parents attended Early Head Start Socializations.
22% of Families participated in Early Head Start Parent Meetings.
875 Children and their families participated in collaborative events.
32 “Men in the Lives of Kids” events where held.

Head Start Expenditures + Stats

Early Head Start (8-1-17 to 7-31-18)

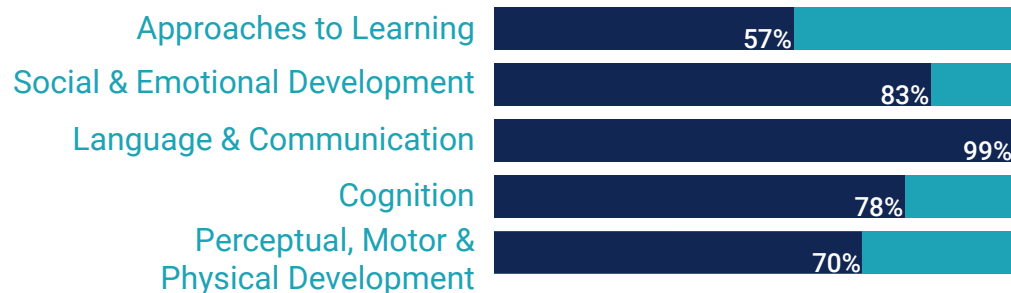
	Budgeted/Allocation	Actual Expenses
Personnel	\$889,092	\$881,938.66
Fringe	\$262,000	\$256,303.21
Travel	\$26,500	\$51,597.35
Equipment	\$45,000	\$79,498.30
Supplies	\$76,511	\$86,961.38
Contractual	\$117,400	\$37,053.31
Other	\$259,349	\$271,278.78
Total Expenses	\$1,675,852	\$1,664,630.99

Head Start (2-1-17 to 1-31-18)

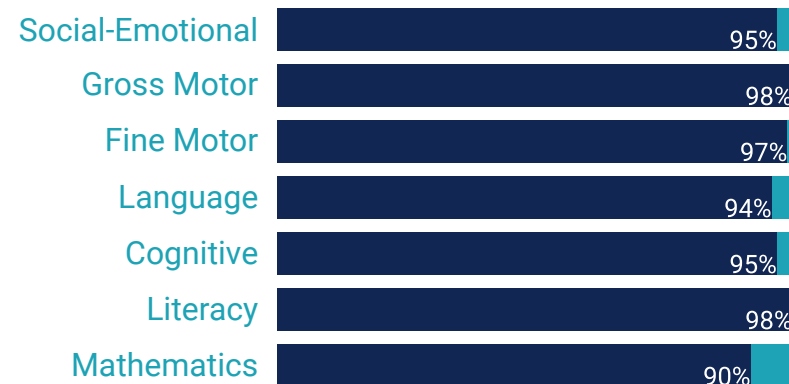
	Budgeted/Allocation	Actual Expenses
Personnel	\$911,507	\$969,301.29
Fringe	\$266,000	\$225,847.60
Travel	\$9,517	\$23,987.88
Equipment	\$0	\$14,101.16
Supplies	\$56,000	\$47,311.61
Contractual	\$75,000	\$82,786.63
Other	\$191,750	\$163,894.14
Total Expenses	\$1,509,774	\$1,527,230.31

School Readiness Goals

Percentage of Early Head Start children meeting or exceeding school readiness goals fall check point



Percentage of Head Start children that are meeting/exceeding expectations for school readiness target goals and achieved goals



Housing & Home Empowerment

New leadership has infused the Housing Services department and its home energy efficiency program with momentum and fresh ideas. The department's new director has assembled a crew with decades of experience to better serve our community and their homes.



At the same time, Home Empowerment Programs continues to guide families and individuals in our community to positive outcomes. Our dedicated staff continues to innovate new proficiencies and develop professionally to provide the best possible service to community members on their journey. Home Empowerment Programs also began a pilot program to prevent student loan crises in the community.

Program Statistics

Housing

- Households with improved health and safety from home improvements 17
- Number of homes Weatherized 34
- Number of people from vulnerable populations whose homes were weatherized 70

Home Empowerment

- Individuals who increased their savings..... 41
- Individuals who improved their financial well-being 28
- Individuals who used savings to purchase a home 16
- Individuals who received financial literacy coaching 58

**“A house is not a home unless it contains food and fire for the mind as well as the body.”
— Benjamin Franklin**

FY 2018 Fiscal Information

Grant Revenue	\$9,125,975
Performance Income	\$21,623
Rental Income	\$68,416
Donations / Other Income	\$566,184
Investment Income	\$33,491
Food Commodities Received	\$859,997
Gain on Sale of Assets	\$4,000
Realized/Unrealized gain on investments	\$85,019
In-Kind contributions	\$1,276,076
Total Revenue	\$12,040,781

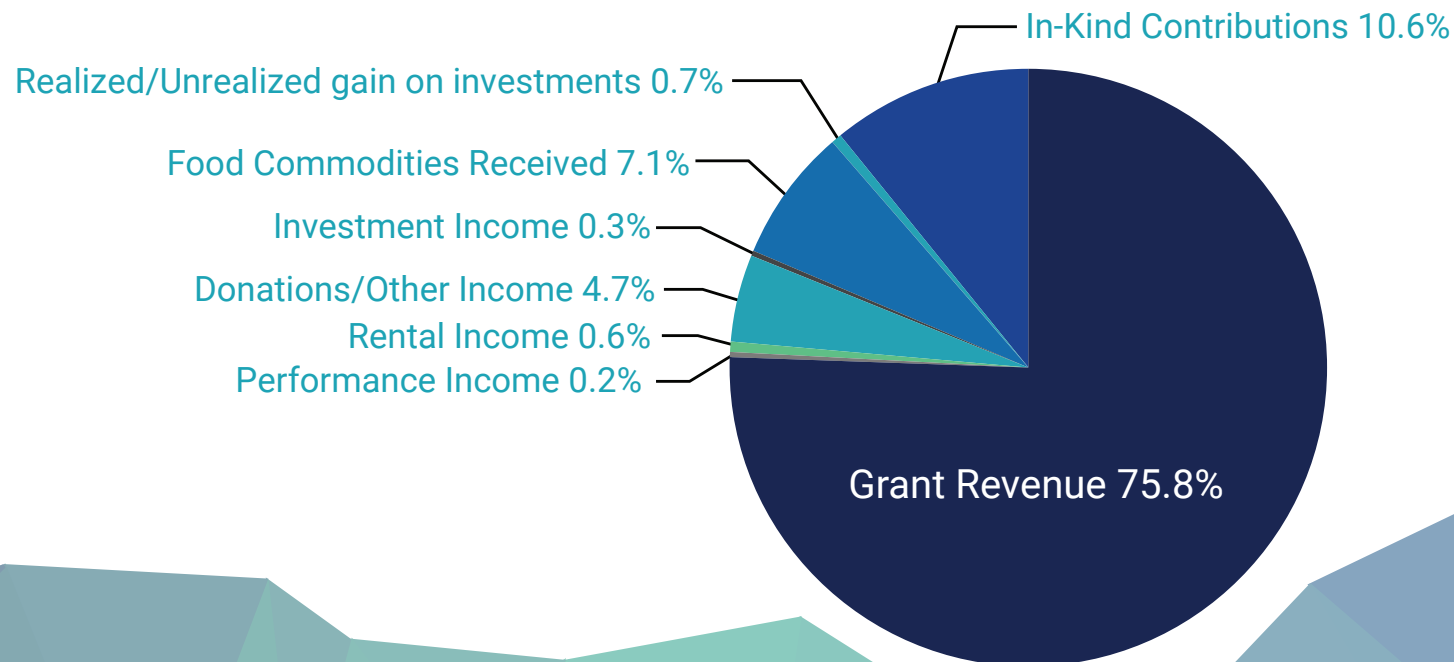
Land & Buildings: \$3,204,208

Corp Assets: \$50,000

ClareCastle & Garfield Manor: \$1,798,602
(senior housing projects)

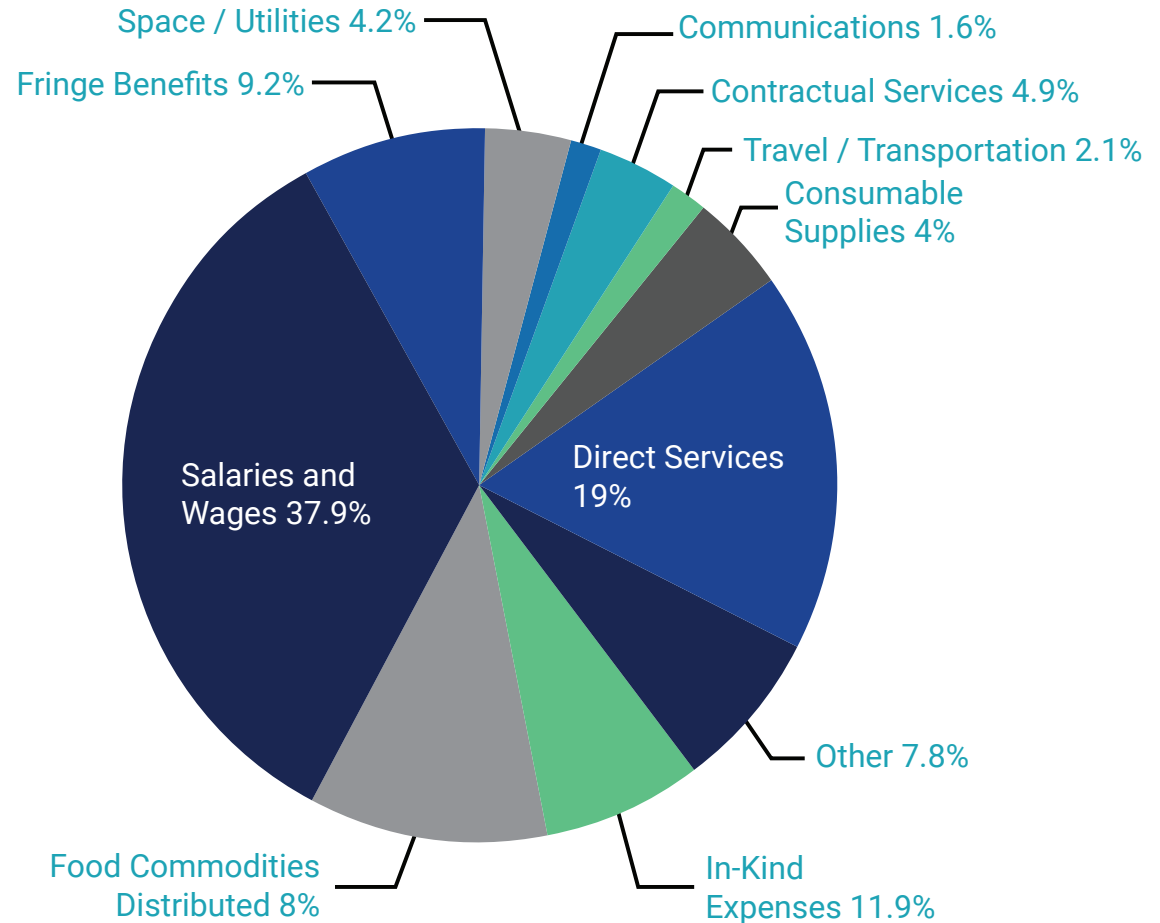
FY Chg. Net Assets: \$181,916

End of Year Assets \$5,616,539



FY 2018 Expenditures

Salaries and Wages	\$4,072,405
Fringe Benefits	\$986,899
Space / Utilities	\$453,360
Communications	\$167,232
Consumable Supplies	\$431,737
Travel / Transportation	\$222,555
Contractual Services	\$524,708
Direct Services	\$2,040,343
Other	\$841,808
Food Commodities Distributed	\$859,997
In-Kind Expenses	\$1,276,076
Total Expenses	\$11,877,120
Total Admin Expenses	\$552,562
Total Program Expenses	\$11,302,660
Total Fundraising Expenses	\$21,898



OUTREACH

Food Warehouse
2300 Ludington Drive
Clare, MI 48617
989-386-3805

Bay County
111 Washington Ave
Bay City, MI 48708
989-894-9060

Clare County
1574 E. Washington Rd
Farwell, MI 48622
989-386-3805

Gladwin County
1302 Chatterton, Unit 1
Gladwin, MI 48624
989-426-2801

Mecosta County
14330 Northland Dr
Big Rapids, MI 49307
231-660-0260

Midland County
1409 Washington St
Midland, MI 48640
989-832-7377

Osceola County
240 E Church Ave
Reed City, MI 49677
231-791-7078

EARLY CHILDHOOD

Beaverton CAPS
106 Tonkin St
Beaverton, MI, 48612
989-246-3272

Clare CAPS
1574 E. Washington Rd
Farwell, MI 48622
989-386-3805

Clare EHS
2050 W Cadillac Dr
Farwell, MI 48622
989-424-5320

Clare HS Preschool
306 Schoolcrest
Clare, MI 48617
989-386-1279

Coleman EHS
4839 Coleman Schools Dr.
Coleman, MI 48618
989-465-1891

Farwell CAPS
2050 W Cadillac Dr
Farwell, MI 48622
989-424-5320

MMCAA Farwell Preschool
268 Ohio St
Farwell, MI 48622
989-588-9916

MMCAA Gladwin Elementary
600 W First St
Gladwin, MI 48642
989-426-3278

Gladwin CAPS/EHS
1302 Chatterton, Unit 1
Gladwin, MI 48624
989-426-2801

Harrison CAPS
579 N Clare Ave
Harrison, MI 48625
989-539-3342

MMCAA Harrison Hillside
201 N. 4th St.
Harrison, MI 48625
989-539-6902

Mecosta EHS & Osceola EHS
410 N 3rd Ave
Big Rapids, MI 49307
231-592-0490

Midland EHS/WIC
Longview ECC
337 Lemke St
Midland, MI 48642
989-837-6659 - EHS
989-832-7310 - WIC

TOLL FREE

Administrative Office
1-877-213-5948

EHS Registration
1-877-386-4406

Homeless / Veteran / Rent
Program
1-877-213-5955

Home Empowerment
1-800-318-0882

RYSE (Runaway &
Homeless Youth - Bay/
Arenac County)
1-844-682-2135

Weatherization
1-877-212-7561

WIC
1-877-210-3169

Administrative Office - 1574 E. Washington Rd PO Box 768, Farwell, MI 48622
989-386-3805

