



mid michigan
COMMUNITY
Action

"Helping People, Changing Lives."



Annual Report 2022



Here for You



Board of Directors

We utilize a unique tripartite board structure. It is composed of one-third democratically elected low-income individuals who reside in our area of service, one-third chosen from major groups and interests in the communities served, and one-third elected officials.

This means that each of our counties has three board members as well as various consultants.

Bay County

Vaughn Begick
William Reder, *Chair*
Carol Goulet

Clare County

Bronwyn Asplund
Norm Gage, *Legal Advisor*
Nancy Jones, *Secretary*

Gladwin County

Joel Vernier, *Treasurer*
Karen Moore
Ruth Johnson

Mecosta County

Jerrilynn Strong
Lori Johnson

Midland County

Steve Glaser
Sharron Such, *Vice Chair*
Susan Weimer

Osceola County

Timothy Michell
Cindy Wertz

Head Start Policy Council Representative

Sharon Payne

Financial Consultant

Jennifer Dancer

Former Member

Linda Howard

Executive Message



This past year has been full of change for all of us. Even as we have all wanted to find a sense of normalcy, the pandemic has lingered on, the job market continues to shift, and not all communities have felt the economic recovery equally. Through all this change, we have remained focused on one simple idea—we are here for you. We are here for our customers, our communities, our volunteers, and our staff.

As our environment and communities have changed, our programs continued to adapt to meet needs. In some cases that has meant bringing services to new areas. As we head into our first full year of being the Community Action Agency for Muskegon and Oceana Counties, we have worked diligently to bring even more services to these communities. Our Weatherization program doubled in size under the new infrastructure package and added five new counties. Not all programs were growing; many services that were available during the height of the pandemic began winding down meaning we had to find innovative ways to empower families to meet their goals.

All this expansion and change requires a team of people who are dedicated and willing to learn on the fly. Like so many employers across the country, recruitment and hiring have been moving targets. The shift in the job market has pushed us to re-evaluate our strengths and focus on why so many of our staff do stay with us. I have been with the agency for 34 years, and I am continually inspired by this amazing group of people who work so hard to help people and change lives.

As we move forward into a new fiscal year, the hard work will continue. We will be taking our Community Needs Assessment to help build and support our new strategic plan. We will work to continue building programs and presence in our new counties as well as our existing service area.

We will, simply put, do everything we can to be here for you.

Fondly,

A handwritten signature in blue ink that reads "Jill Sutton". The signature is written in a cursive, flowing style.

Jill Sutton, Executive Director

Outreach Services

2022 was a year of major change for our department and the Community Action Centers that serve each of our counties. We have worked hard to make sure our programming was flexible enough to meet the needs of our customers during a time of rising prices and a challenging economic climate. Shifting focus from solely utilities to the categories of housing stability and home loss prevention really allowed for a wider variety of needs to be met. We are also proud of the impact our smaller programs have made like the diaper bank support and volunteer income tax assistance. We look forward to continuing to adapt in order to be here for our customers.

Food Commodities

29,318 monthly food boxes were distributed to seniors.

9,528 quarterly food boxes were distributed to households.

9,171 volunteer hours went into packing commodities boxes.

\$1,345,405 is the value of USDA food distributed to commodities customers.

Housing Stability

799 households were assisted in maintaining or reconnecting heat and utility services.

\$386,244 was distributed to households in heat and utility assistance.



Diaper Bank

1,058 households with 1,364 dependents received diapers.

\$56,541 was distributed in goods to households for diapers.

Outreach Services

Homeless Assistance

\$542,208 was distributed to households in assistance to obtain or maintain safe and affordable housing.

135 households (261 individuals) were staying in shelter, cars, or outside and obtained housing.

228 households (445 individuals) were at risk of becoming unhoused and maintained housing.

Homeless Prevention

\$155,590 was distributed to homeowners for mortgage and property tax assistance.

179 households avoided foreclosure.

Housing Counseling

230 participants attended rental, financial capability, homebuyer education, and other workshops.

28 individuals received one-on-one Housing Counseling services.

Income Tax Preparation

919 households received tax preparation assistance.

\$862,744 in tax returns came back into Clare, Gladwin, Mecosta, and Osceola Counties.



Early Childhood Services

Early Childhood Services staff continue to provide a warm blanket of support for the children and families in our community. They continue to educate, support and empower; building strong families, strong communities.

Children Served

Head Start208
Early Head Start253

Families Served

Head Start216
Early Head Start203

Pregnant Women Served

Early Head Start30

Average Monthly Enrollment

Head Start180
Early Head Start141

Children up-to-date on a schedule of primary and preventative health care

Head Start96%
Early Head Start85%

Children completing dental exams and oral health screenings

Head Start79%
Early Head Start85%

Children up-to-date on immunizations

Head Start94%
Early Head Start92%

Children enrolled with a disability

Head Start21%
Early Head Start22%

Family Involvement

61% of Head Start Families participated in Head Start parent meetings.

The average monthly Early Head Start parent meeting attendance was 5 with 61 parents and children attending in total.

The average monthly Early Head Start socialization attendance was 6 with 130 parents and children attending in total.

250 Children and their families participated in collaborative events.

33 “Men in the Lives of Kids” events were held with 117 males attending.

Early Head Start participated in 71 collaborative community events and actively planned 25% of those events.

Program Notes

The Office of Head Start conducted a Focus Area 2 review of Early Head Start and noted no material findings or deficiencies.

Mid Michigan CAA’s Early Head Start and Head Start programs have chosen curriculum that supports school readiness and tracks child outcomes. The agency also coordinates with area public schools to facilitate smooth transitions for each child.



Early Childhood Services

Early Head Start

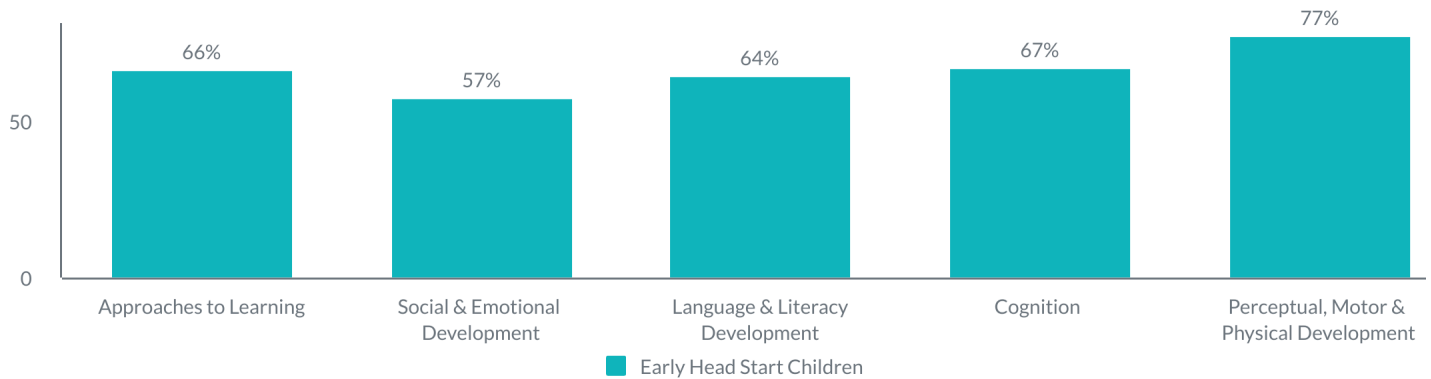
	Budget/ Allocation	Actual Expense
Personnel	\$1,506,229	\$1,401,678
Fringe	\$448,804	\$298,369
Travel	\$27,767	\$10,754
Equipment	\$100,000	\$112,912
Supplies	\$150,804	\$155,007
Contractual	\$154,000	\$116,339
Other	\$366,951	\$480,996
Total Expenses	\$2,754,555	\$2,576,055

Head Start

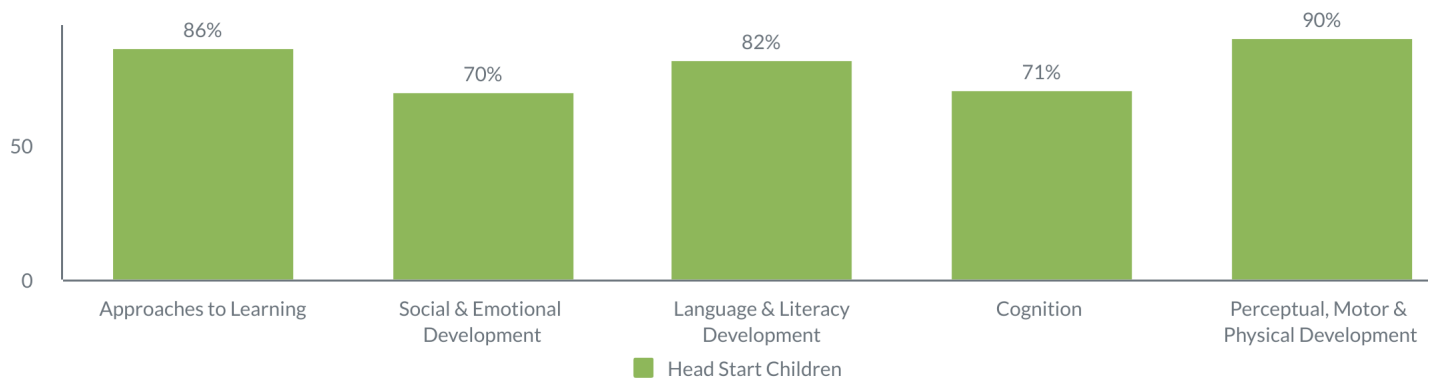
	Budget/ Allocation	Actual Expense
Personnel	\$1,418,675	\$1,163,346
Fringe	\$242,884	\$262,892
Travel	\$16,261	\$8,367
Equipment	—	\$12,899
Supplies	\$121,850	\$160,005
Contractual	\$191,690	\$116,881
Other	\$234,526	\$264,568
Total Expenses	\$2,225,886	\$1,988,958

School Readiness Goals

Percentage of Early Head Start children who are meeting or exceeding school readiness goals at the end of the 2022 program



Percentage of Head Start children who are meeting or exceeding school readiness goals at the fall checkpoint



Housing Services

The Housing Services department was able to be here for our communities like never before with over twice as many households served as in 2021 and over three times as many served as in 2020.

This is thanks to a combination of factors including additional funding for multi-family housing units and Weatherization deferral funding.

Weatherization deferral allows us to resolve issues in homes that must be addressed before Weatherization can take place such as roof problems. This means we can serve more households, make sure they are safer and more comfortable in their homes, and lower their energy costs.

Weatherization Assistance Program

\$1,413,858 invested in local homes

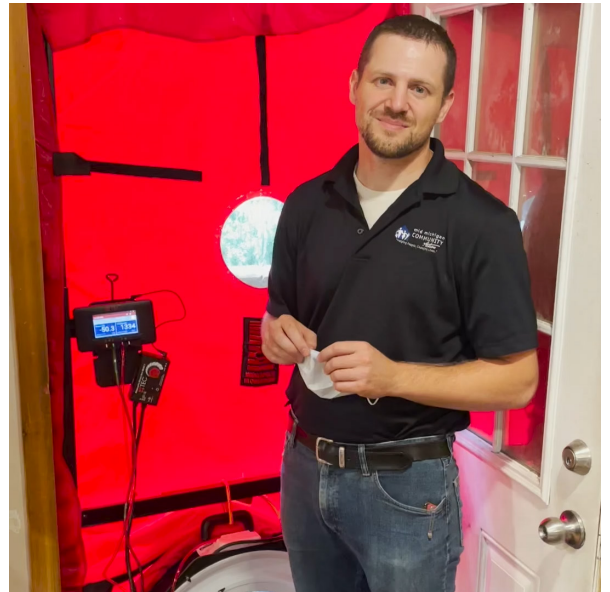
\$8,674 average invested per home

163 homes were weatherized

- 78 homes with seniors
- 88 homes with people with disabilities
- 44 homes with children under 18

332 people served through weatherization services

- 88 seniors
- 101 people with disabilities
- 98 children under 18



Weatherization Deferral

\$313,585 invested in Weatherization deferral

83 households served through Weatherization deferral

COVID Emergency Rental Assistance

COVID Emergency Rental Assistance, or CERA, continued in full force in FY22. We were happy to bring this level of funding and assistance to our communities. With so many struggling to make rent or get caught up, this program was critical in preventing a homelessness crisis in our area. We are so proud of the work our staff did both with our customers but also with area landlords to distribute over \$6 million in assistance preventing homelessness for over 1500 households.

As we look forward, this program has sunsetted, so we are transitioning our effort to partnering with local courts to help connect people on the verge of eviction with resources that can help them.

Households received **\$6,389,081.46** through CERA

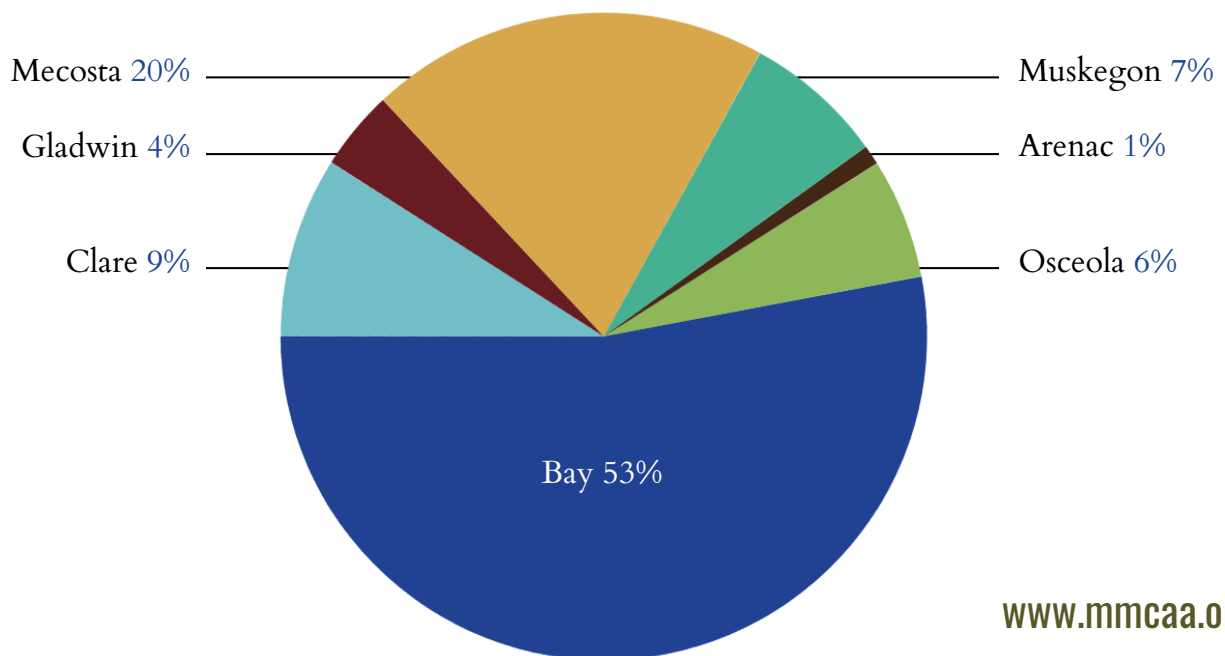
\$5,343,784.83 in housing assistance

\$1,045,296.63 in utility assistance

\$4,090 was the average assistance per household

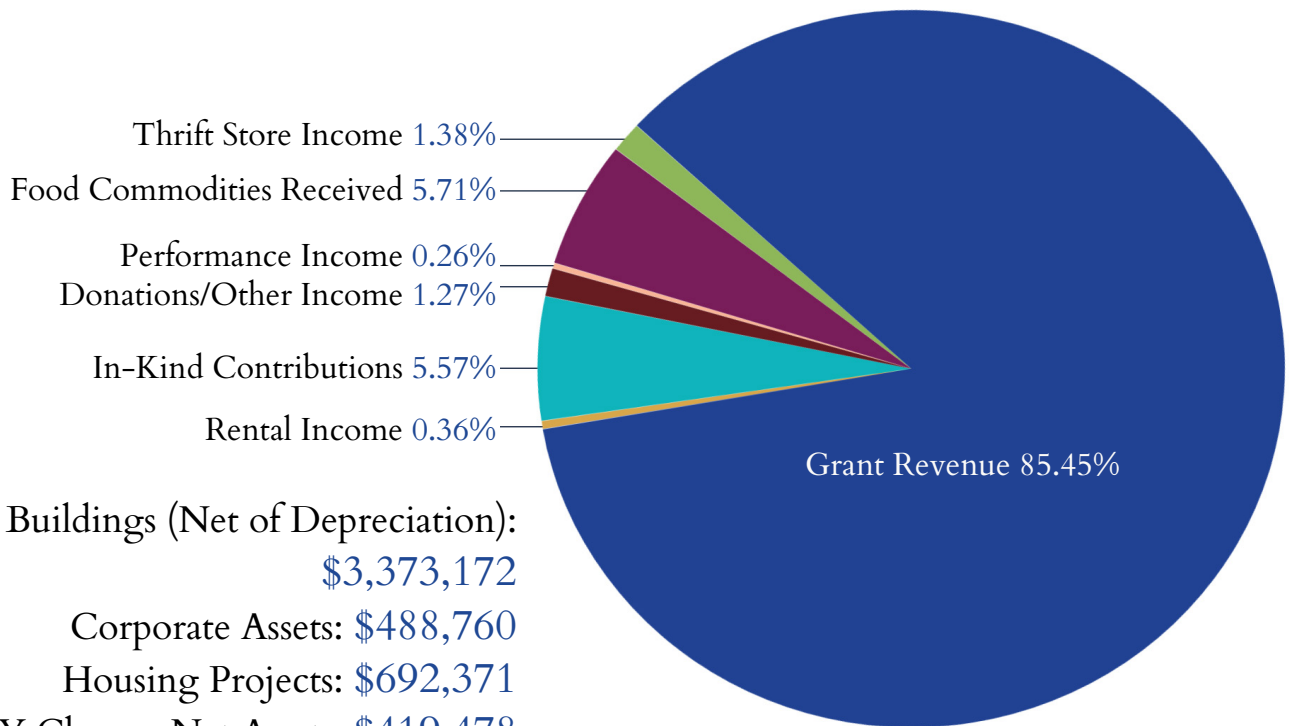
1,562 households received assistance

Award Distribution by County



Fiscal Year 2022 Information

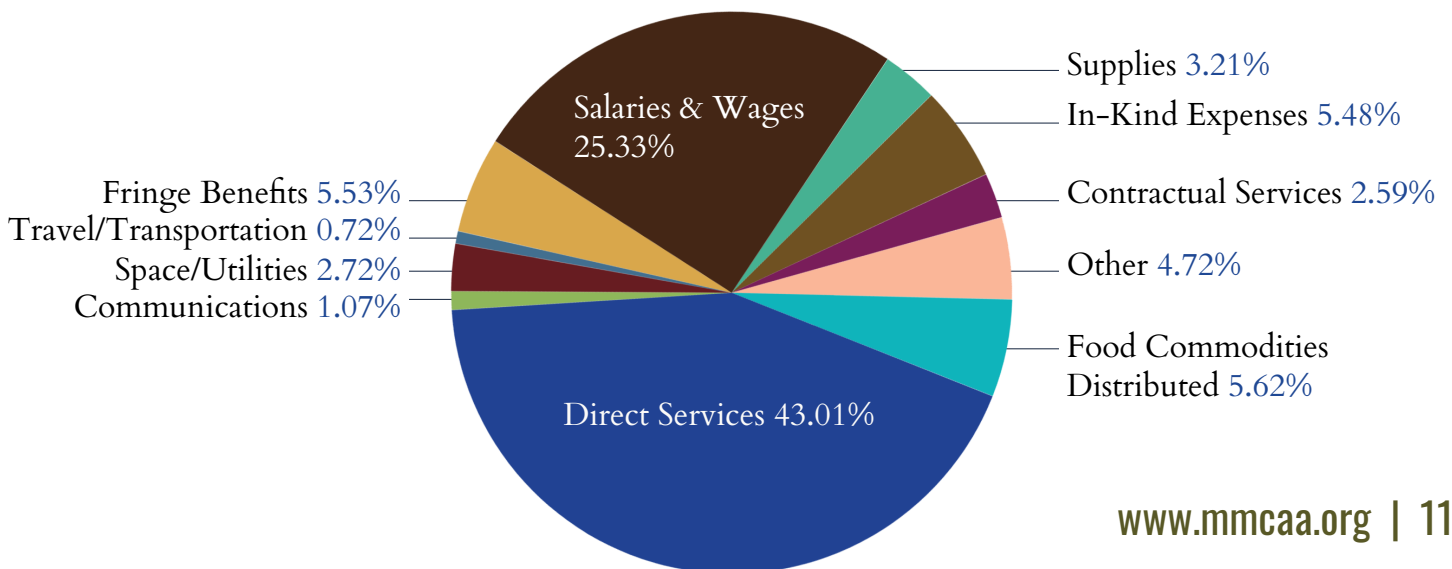
Grant Revenue	\$20,918,766
Performance Income	\$63,934
Rental Income	\$87,108
Donations/Other Income	\$668,625
Investment Income	\$20,860
Food Commodities Received	\$1,398,155
Thrift Store Revenue	\$337,548
Gain on Sale of Assets	(\$31,716)
Realized/Unrealized Gain on Investments	(\$347,256)
In-Kind Contributions	\$1,363,837
Total Revenue	\$24,479,861



Land & Buildings (Net of Depreciation):
 \$3,373,172
 Corporate Assets: \$488,760
 Housing Projects: \$692,371
 FY Change Net Assets: \$419,478
 End of Year Assets: \$5,916,984

Fiscal Year 2022 Expenditures

Salaries and Wages	\$6,308,656
Fringe Benefits	\$1,376,367
Space/Utilities	\$676,476
Communications	\$266,620
Supplies	\$798,665
Travel/Transportation	\$178,510
Contractual Services	\$644,743
Direct Services	\$10,711,242
Other	\$1,176,068
Food Commodities Distributed	\$1,398,155
In-Kind Expenses	\$1,363,837
Total Expenses	\$24,899,339
Total Management & General Expenses	\$856,134
Total Program Expenses	\$24,011,432
Total Fundraising Expenses	\$31,773



Community Action Centers

Early Childhood

Bay County
114 Washington Ave
Bay City, MI 48708
989-894-9060

Midland County
1409 Washington St
Midland, MI 48640
989-832-7377

Clare County
1574 E Washington Rd
Farwell, MI 48622
989-386-3805

Muskegon County
878 Jefferson St
Muskegon, MI 49442
231-557-7622

Gladwin County
1302 Chatterton
Gladwin, MI 48624
989-426-2801

Oceana County
907 S State St #102
Hart, MI 49420
231-557-7622

Mecosta County
14330 Northland Dr
Big Rapids, MI 49307
231-660-0271

Osceola County
240 E Church St
Reed City, MI 49677
231-791-7078

Food Warehouse
2300 E Ludington Dr
Clare, MI 48617
989-386-3805

Homeless Assessment
and Resource Agency
(HARA) Toll Free
1-877-213-5955

Administrative Office

1574 E. Washington Rd.

PO Box 768

Farwell, MI 48622

(989)386-3805

contactus@mmcaa.org

Toll Free: 1-877-213-5948

Beaverton CAPS
106 Tonkin St
Beaverton, MI, 48612

Gladwin Elementary
600 W First St
Gladwin, MI 48624

Clare CAPS
1574 E Washington Rd
Farwell, MI 48622

Gladwin CAPS/EHS
1302 Chatterton,
Gladwin, MI 48624

Clare Castle
502 Beech St
Clare, MI 48617

Harrison Hillside
224 W. Main St.
Harrison, MI 48625

Clare EHS
2050 W Cadillac Dr
Farwell, MI 48622

Mecosta/Osceola EHS
410 N 3rd Ave
Big Rapids, MI 49307

Coleman EHS
4839 N Coleman
Schools Rd
Coleman, MI 48618

Midland EHS/WIC
Longview ECC
337 Lemke St
Midland, MI 48642
989-832-7310 - WIC

Farwell Preschool
268 Ohio St
Farwell, MI 48622

WIC Toll Free
1-877-210-3169

Early Head Start
Registration Toll Free
1-877-386-4406

Connect with Us!

[@midmichigancommunityaction](https://www.instagram.com/midmichigancommunityaction)



www.mmcaa.org



This institution is an equal
opportunity provider & employer.
Michigan Relay Center
1-800-649-3777 (TDD)

